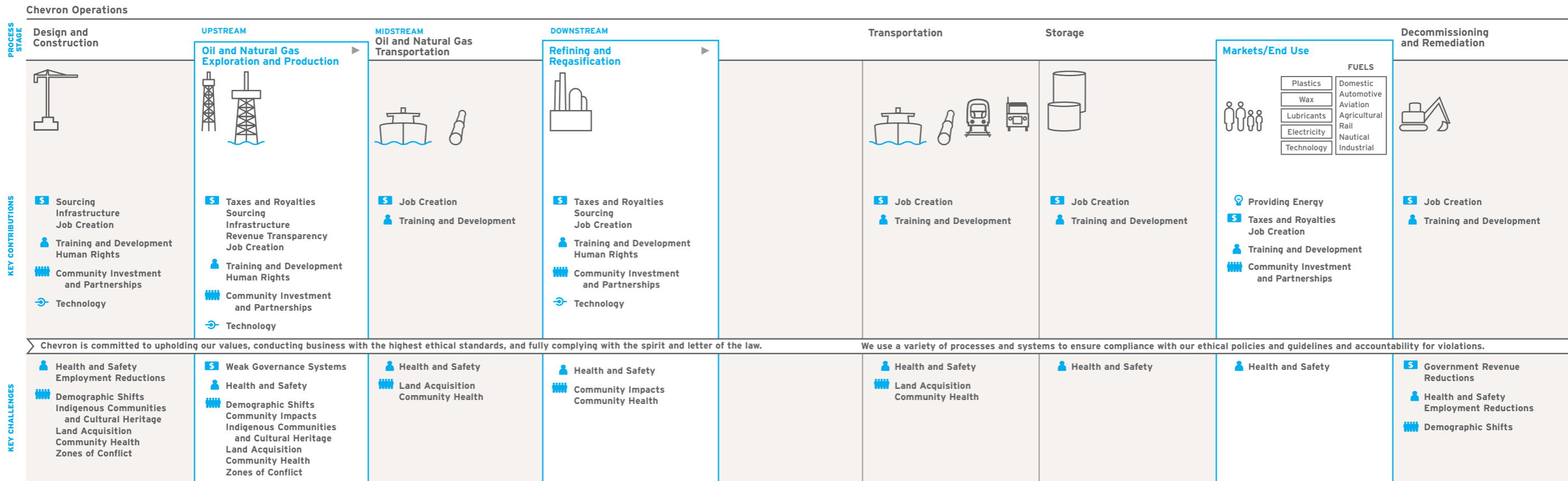


# SOCIOECONOMIC ISSUES OVERVIEW

This diagram provides an overview of Chevron's core business activities and the key socioeconomic contributions the company can make at each stage. Additionally, it highlights the challenges the company faces - those associated with our operations, as well as broader societal issues that characterize our operating environment.

The issues listed in the diagram and at each stage are not exhaustive. Rather, we have sought to identify the contributions and challenges most significant at each stage throughout the life cycle of our operations.



## KEY CONTRIBUTIONS

### ENERGY AND PRODUCTS

**Providing Energy** For a wide variety of uses and products, such as home heating, power generation, transportation, plastics and lubricants.

### ECONOMIC DEVELOPMENT

**Taxes and Royalties** Payments to governments.

**Sourcing** Payments to local, national and international contractors and suppliers. Dedicated efforts to source from and help develop small and locally owned businesses.

**Infrastructure** Contributions to local and national physical infrastructure.

**Revenue Transparency** Promoting transparency and good governance in the management of oil and gas revenues.

**Job Creation** Providing employment, wages, benefits. Focus on hiring and training employees from the communities and countries in which we operate.

### EMPLOYEES AND CONTRACTORS

**Training and Development** Providing employees and contractors with training and other opportunities to develop skills.

**Human Rights** Supporting universal human rights, consistent with the role of business.

### COMMUNITY

**Community Investment and Partnerships** Monetary and in-kind contributions, partnerships and programs to support social and economic development where we operate.

### TECHNOLOGY TRANSFER

**Technology** Sharing technology and know-how with our business partners.

## KEY CHALLENGES

### ECONOMIC DEVELOPMENT

**Weak Governance Systems** Operating in environments that lack sound governance systems and where the rule of law is weak.

**Government Revenue Reductions** Following closure of operations.

### EMPLOYEES AND CONTRACTORS

**Health and Safety** Protecting the health and safety of those working on our behalf or affected by our operations.

**Employment Reductions** Following completion of construction phase or closure of operations.

### COMMUNITY

**Demographic Shifts** Population migrations and attendant community and economic impacts.

**Community Impacts** Effects of oil and gas development on the social, political and economic fabric of local communities.

**Indigenous Communities and Cultural Heritage** Respecting the rights, traditions, livelihoods and cultural attributes of indigenous and other local communities.

**Land Acquisition** Process and effects of acquiring land for operations, including potential resettlement.

**Community Health** Effects of new or existing health issues, particularly HIV/AIDS, on workforce and local communities.

**Zones of Conflict** Operating in regions affected by conflict.

